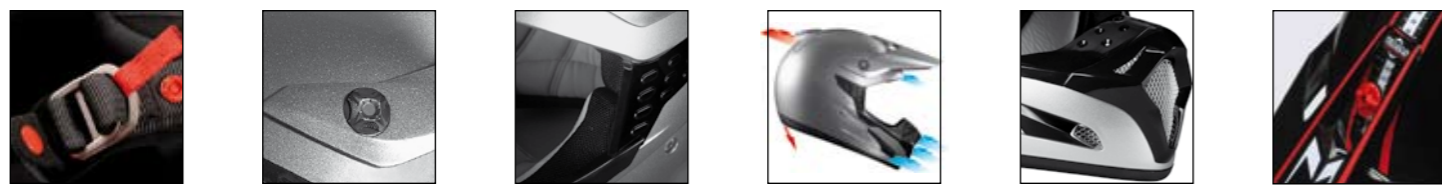


# SMX



## Technology

---

### Shell Security Interior/Comfort/Finishing

---

- I.M.A.C. Ultra light injected - Impact Modified Alloy Composite
- Integrated aerodynamic stabilizer
- XS - XL (XXS + XXL for some items)

- SMX SuperSkin
- Double D racing buckle
- Wide peripheral vision
- Aluminium screws - no tool needed
- Goggle strap anti-slip
- Anti-reflecting sticker under the peak
- EPS double density - Optimised upper insert protection

- F.A.S. - Full Air System
- Chin cover for better ventilation
- 100% removable and washable
- Morpho System - cheek and head pads available in your size
- 2 large integrated air nets\*
- Repellent fabric under the nets\*
- Flexible nose deflector
- Multi adjustment wide angle peak, fast and easy to adjust without tool
- Flexible and adjustable peak
- Helmet bag



cm	51	52	53	54	55	56	57	58	59	60	61	62	63	64
	2XS	XS	S	M	L	XL	XXL							

XXS : Factory White - Grey; Stunt White - Grey; Destroy Black - Grey  
 XXL : Air Black - White; Factory White - Grey; Destroy Black - Grey

+/- 1250 gr (L)  
 \* SMX Air

ECE 22.05

